

KATO CES

Zero Tail Swing Mini Excavator

V^{Four} HD60

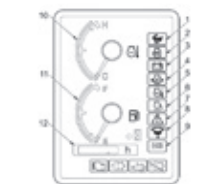


Comfortable EVOLUTION

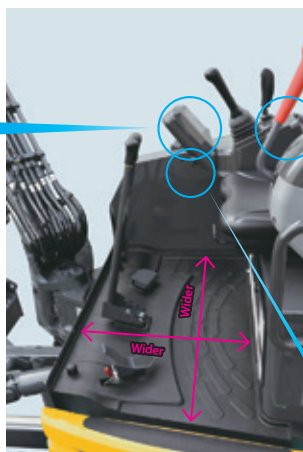
COMFORTABLE OPERATOR ROOM AND EASY MANIPULATION



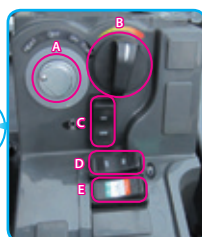
- Easily visible monitor



- 1 Travel speed indicator
- 2 Glow indicator
- 3 Battery charge warning indicator
- 4 Engine oil pressure warning indicator
- 5 Water temperature warning indicator
- 6 Auto idle indicator
- 7 Control lock warning indicator
- 8 Water-separator warning indicator
- 9 ECO mode indicator
- 10 Water temperature gauge
- 11 Fuel gauge
- 12 Hour meter



- Leg room enlarged by 20%
- Cabin room enlarged by 25%
- *In comparison with our former model



- Centralized switches (Right console box)
- A Engine starter switch
- B Throttle dial
- C Auto Idle selector switch
- D Light switch
- E Work mode selector switch



- Spare power port (12V 10A)

High Performance EVOLUTION

HIGH POWER DIGGING AND QUICK RESPONSE

- Digging force increased by 10%
*In comparison with our former model
- Quickly responsive 4-pump system

EASY MAINTENANCE

- Large covers for easier access



- Right hand cover



- Engine room

Safety EVOLUTION

WORLD-STANDARD SAFETY

- ROPS/TOPS Compliance Operator Cab and Canopy
- ROPS/TOPS Canopy (std.)
- ROPS/TOPS Cab (opt.)
- FOPS Cab (opt.)



ROPS/TOPS Cab (opt.)

ERROR-PREVENTION

- All-lever lock
- Neutral engine-start
- Auto-parking brake in swing & traction motors



All operations are blocked when the lever is raised.

Hydraulic tank with air breather



Large fuel filter

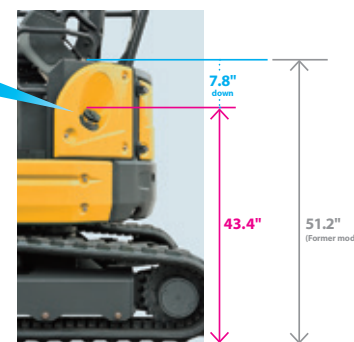


Water-separator



- * The warning indicator turns on if water is collected up to the specified level.

EASY FUEL REFILLING



Refilling position (unit : inches)

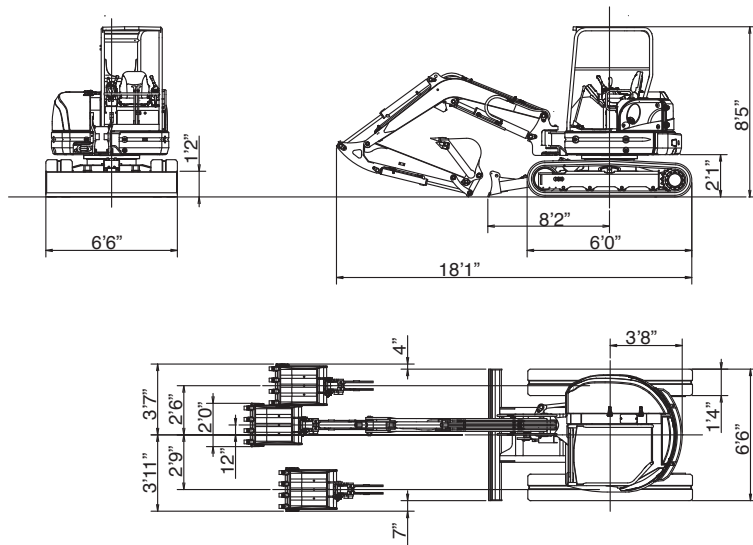
LOW FUEL CONSUMPTION

24% FUEL SAVINGS

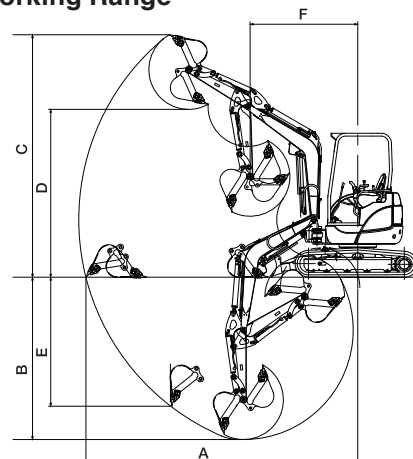
- From the New Auto Idle and Eco Mode Features.
- *In comparison with our former model



■ Dimensions



■ Working Range

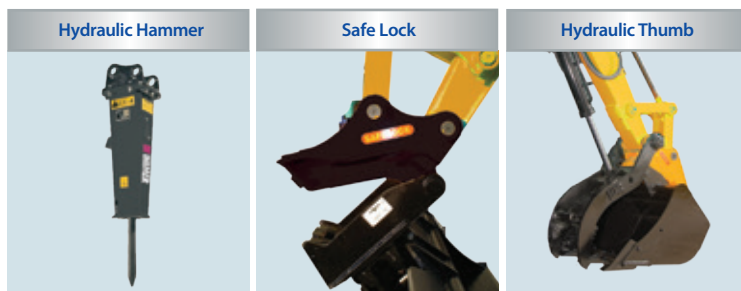


| | 4-Post/Cabin |
|-------------------------------|--------------|
| A Max. digging radius | 21'2" |
| B Max. digging depth | 13'3" |
| C Max. digging height | 19'0" |
| D Max. dumping height | 13'9" |
| E Max. vertical digging depth | 10'7" |
| F Min. front turning radius | 8'1" |
| At right boom swing | 7'0" |

■ 60V4 Specifications

| Performance | | Boom swing system | |
|---------------------------------------|------------------------------|---------------------------------------|---|
| Bucket capacity | 7.0 cu. ft. | Type | Boom offset with hydraulic cylinder |
| Bucket width | 24" | Swing angle (L/R) | 50°/80° |
| Operating weight: 4 Post (Cabin) | 12,128 lbs. (12,595 lbs.) | Hydraulic system | |
| Transportation weight: 4 Post (Cabin) | 11,795 lbs. (12,262 lbs.) | Pressure | 3,554 psi |
| Swing speed | 9.3 min ⁻¹ | Type • Pump hydraulic flow | 2 Piston/2 Gear • 15.9 gpm x 2 + 11.7 gpm |
| Travel speed (low/high) | 1.8/2.8 mph | Dozer blade | |
| Gradeability | 30° | Size | 78"x15" |
| Ground pressure | 4.5 psi | Lift above ground / Drop below ground | 18"/17" |
| Max bucket digging force | 12,100 lbs. | Max auxiliary flow | |
| Engine | | 1st line | 15.8 gpm |
| Model | KUBOTA V2403-CR Tier 4 Final | 2nd line (optional) | 11.6 gpm |
| Rated output | 44hp/2,400 rpm | | |
| Fuel tank capacity | 17.4 gallons | | |

Optional Attachments:



Photographs may differ in some cases from actual objects. Specifications are subject to change without notice due to technical improvements or modifications.

Features:



COMPACT EXCAVATOR SALES, LLC
 400 Production Court • Elizabethtown, KY 42701
 Phone: 800.583.1447 • Fax: 270.737.0419
WWW.KATOCES.COM