

# D3G, D4G, D5G

## Track-type Tractors



|                   | D3G         | D4G         | D5G         |
|-------------------|-------------|-------------|-------------|
| Cat® Engine       | 3046 T      | 3046 T      | 3046 T      |
| Gross Power       | 57 kW/77 hp | 65 kW/87 hp | 74 kW/99 hp |
| Net Power         | 52 kW/70 hp | 60 kW/80 hp | 67 kW/90 hp |
| Operating Weight* |             |             |             |
| XL                | 7750 kg     | 8260 kg     | 9320 kg     |
| LGP               | 8190 kg     | 8600 kg     | 9670 kg     |

\* Operating with dozer blade, cab, back-up alarm, operator, coolant, lubricants and full fuel tank.

## D3G, D4G and D5G Track-Type Tractors

*Introducing the new D3G, D4G and D5G Track-Type Tractors – designed for all of your construction needs.*

### AccuGrade Laser Grade Control System

- ✓ Caterpillar® is helping customers revolutionize the way they move dirt with new technology solutions. The AccuGrade Laser Grade Control System provides greater accuracy, higher productivity, lower operating costs and more profitability. **pg. 4**

### Operator Station

The redesigned operator station is quieter and more spacious for a comfortable work environment. Excellent sightlines to the work area help keep operator fatigue low and production up throughout the workday. Improved ergonomic design further enhances operator comfort. **pg. 6**

### Visibility

- ✓ Overall visibility has been significantly improved to enhance productivity and work quality. With 13% more glass area than the previous C-Series models and no obstructions, the D3G, D4G and D5G have a good view to the blade as well as an excellent peripheral view. **pg. 9**

### Attachments

- ✓ New Cat work tools increase your productivity. Product Link and Machine Security System help protect your investment. **pg. 11**

### Blade and Mainframe

A Variable Pitch, Power Angle and Tilt (VPAT) blade is available on all G-Series machines. Rugged construction and powerful hydraulics provide excellent down force, pry-out force and blade control for maximum productivity. **pg. 12**

*The new D3G, D4G and D5G combine the power of a larger tractor with the versatility and maneuverability of a smaller machine in one package to meet a wide range of job applications. With comfortable operator station, excellent visibility and simple joystick control, the D3G, D4G and D5G are everything you expect from Caterpillar® and more!*



---

### Engine

The proven turbocharged six-cylinder Caterpillar 3046 T engine delivers plenty of lugging power. The engine provides smooth, responsive power, excellent fuel economy and lasting reliability. The 3046 T engine meets EU Stage II emission regulations.

**pg. 8**

---

### Hydrostatic Transmission Control

- ✓ Simple joystick control eases operation and provides track counterrotation. Due to the machine's nimble control, the operator has a better feel for the machine's capabilities and can maneuver more easily.

**pg. 8**

---

### Hydrostatic Winch

- ✓ Providing infinitely variable line speed while delivering superior line pull, this new winch improves control for better modulation. Caterpillar is the first to produce a hydrostatic winch for machines in the under 100 hp class.

**pg. 13**

---

### Undercarriage

Rugged design and proven structural manufacturing assure outstanding durability for long wear life and low owning and operating costs.

**pg. 10**

---

### Undercarriage with Rotating Bushing Track Option

Rotating Bushing Track option on the D5G eliminates the need to turn pins and bushings, significantly reducing owning and operating costs. Rugged design and proven structural manufacturing assure outstanding durability. **pg. 10**

---

### Serviceability and Customer Support

Your Cat dealer offers a wide range of services that can be set up under a customer support agreement when you purchase your equipment. Your dealer will help you choose a plan that can cover everything from machine and attachment selection to replacement.

**pg. 14**



✓ *New feature*

# AccuGrade Laser Grade Control System

*Advanced laser technology simplifies grading, improves accuracy, increases productivity and lowers operating costs.*



## Simple Operation.

The AccuGrade System consists of 4 basic components:

- Laser Transmitter
- Laser Receiver
- Electric Mast
- In-Cab Display

**1 Laser Transmitter.** An off-board laser transmitter (sold separately) emits a thin beam of light that rotates 360°, creating a grade reference over the work area. The transmitter is mounted on a tripod so the laser beam can rotate unobstructed above the tractor.

**2 Laser Receivers.** A digital laser receiver, mounted on a telescopic mast above the blade's cutting edge, is used to detect the laser beam. During grade set-up, with the cutting edge placed at finish elevation, the electric mast automatically positions the laser receiver to within 1.5 mm of the center of the laser beam. As the blade moves above or below finish grade elevation during the grading process, correction information is sent to the in-cab display. One receiver is required for single dimension control (lift) and two receivers are required for two-dimensional control (lift and tilt).

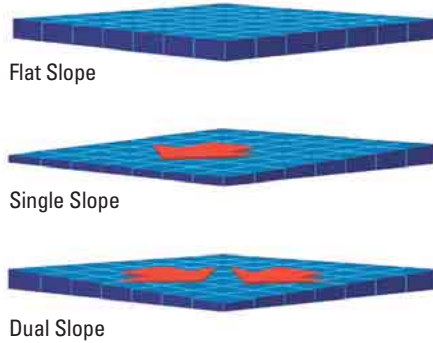
**3 Electric Masts.** Electric adjustable machine-mounted telescopic mast(s) are used for mounting the laser receiver(s) over the cutting edge, ensuring unobstructed laser reception. Powered by an electric motor, the operator can vertically raise and lower the mast(s) from inside the cab for precise positioning of the receiver(s)' elevation.



**Advantages.** Current earth moving and fine grading processes are labor intensive, dependent on manpower and instruments. Maintaining consistent grade between grade stakes is challenging, even for experienced operators. The AccuGrade Laser Grade Control System reduces labor requirements, aids operators in maintaining a consistent grade across the worksite and reduces material cost.



**4 In-Cab Display.** The in-cab display with easy to read grade indicator and backlit elevation display delivers all AccuGrade system information to the cab for easy viewing by the operator. The in-cab display arrows show the blade's position relative to grade and indicates cut or fill requirements of the work area. A built-in beeper provides audible tones to indicate grade errors and switch activation. Push button operation allows the operator to easily switch from manual mode for rough grading to automatic for fine grading.

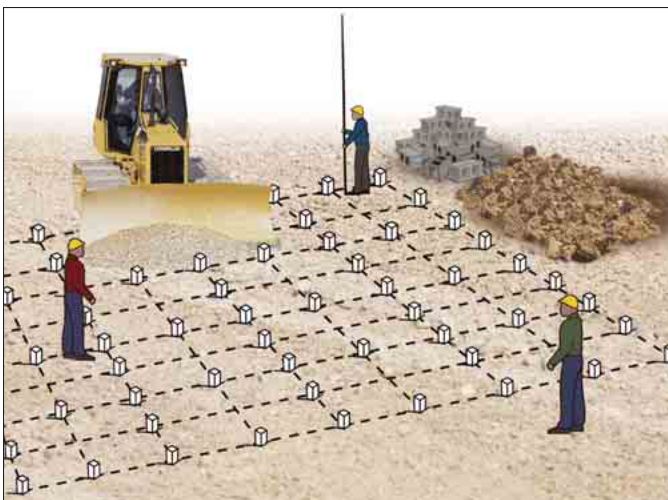


**Applications.** The AccuGrade System is designed for a wide range of construction earthwork applications requiring tight tolerances and high production rates. The single laser system or dual laser system can be selected depending on the job requirements. The single laser system is ideal for fine grading sites with flat, single slope surfaces. The more versatile dual laser system is well matched for single or dual slope surfaces such as industrial, commercial and residential building sites.



**Automatic Blade Control Feature.** Automatic control of the blade's lift and/or tilt, depending on single or dual receiver system, provides consistent accuracy with higher productivity by reducing blade control demands on the operator. Based on correction signals, a hydraulic control valve automatically raises or lowers the blade cutting edge to maintain the correct blade cutting edge elevation. A single push button mounted on the blade control lever allows the operator to easily switch from automatic to manual control for various work conditions.

**Weatherproof Design.** All components are designed rugged for dependable performance in harsh environments.



Conventional Staking Method



AccuGrade Laser Grade Control System

## Operator Station

*The redesigned operator station is quieter and more spacious for a comfortable work environment.*



**Redesigned Operator Station.** Based on the cab designs of the large Caterpillar track-type tractors, the operator station has been redesigned to be more spacious. The new ergonomic layout emphasizes simplicity, ease of use and comfort. A new climate control system (HVAC), increased leg room and enhanced visibility allow the operator to focus on the job. With 13% more tinted glass area, the operator station provides a clear view to the blade and the surrounding work site.

### **Other Cab Conveniences.**

- Vertical and horizontal armrest adjustments.
- Directed air vents in key locations.
- Wide angle rear view mirror.
- Cupholder.
- 12 volt power port.
- Radio ready factory installed components including speakers, antenna and all wiring brackets.
- Dome light.
- Coat hook.
- Tie down for lunch box.
- Air conditioner (standard equipment).

**Reduced Sound Levels.** Sound levels are greatly reduced to further enhance the operator's comfort.



**VPAT Dozer Control.** A single lever control handle is used to control all blade lift, angle and tilt functions. The ergonomically designed handle fits comfortably in the operator's hand and delivers superb grading results.

**Decel Pedal.** Decelerator allows operator to modulate ground speed effortlessly. Intuitive control enhances operator confidence when maneuvering in and around structures.



**Ease of Entry and Exit.** The hexagon shaped cab provides plenty of space to enter the roomy operator compartment. Easy to reach door handles make it easy to enter and exit during the workday. Angled doors allow the operator to walk right into the cab.



**Monitoring Package.** The new monitoring package allows the operator to be aware of system conditions without having to constantly view gauges. Fuel level, hydraulic oil temperature, oil pressure, coolant temperature, and maximum speed setting gauges are all included in the instrument panel. Indicator lamps warn operator of:

- Low oil pressure.
- Power train oil filter bypass.
- Low alternator voltage.
- Parking brake engaged.
- Electronic control fault.
- Water in fuel
- Air inlet restriction
- Air intake heater

**Other Features.**

- Footrests for operator comfort and stability
- Vandalism guard to protect dash and instruments (canopy machines only)



**Seat.** The Caterpillar Comfort Suspension seat (option) provides adjustable positioning to fit any operator. It is the most comfortable seat in the industry and features:

- 76 mm wide retractable seatbelt.
- Fore/aft positioning.
- Back cushion angle adjustment.
- Seat cushion tilt.
- Back rest extension.
- Lumbar adjustment.
- Height adjustment.
- Cloth seat is standard with cab; vinyl seat is available on open canopy machines.

Standard suspension vinyl seat provides basic support.

## Engine

*The well-proven Caterpillar 3046 T six-cylinder engine provides smooth, responsive power, excellent fuel economy and lasting reliability.*



### **Caterpillar 3046 T Diesel Engine.**

Designed specifically for small to medium size earthmoving machines, the Cat six-cylinder 3046 T engine is inherently balanced, providing low vibration, superior performance and exceptional responsiveness.

The 3046 T engine is designed for improved response and performance at lower engine speeds. This is important for earthmoving machines in the under 100 hp size class, allowing operators to work in tight spaces, at part throttle and slower travel speeds without sacrificing responsiveness. The turbocharger also helps reduce fuel consumption and sound levels.

### **Direct Injection Fuel System.**

The direct injection fuel system is adjustment free for reduced maintenance. High pressure fuel injection results in reduced fuel consumption and emissions. Electric, internal fuel shut-off solenoid is protected from the elements to provide long life.

**Turbocharger.** The turbocharger improves response and performance at low to medium engine speeds.

### **Spin-on Oil and Fuel Filters.**

Spin-on oil and fuel filters are vertically mounted and easily accessible for faster maintenance.

## Hydrostatic Transmission Control

*Simple joystick control eases operation and increases productivity.*



### **Simpler Operation, Improved Control.**

We listened to our customers and designed the new G-Series machines with even simpler operation and improved control. This allows the operator to concentrate on more important aspects of the job such as blade control.

**Joystick Control.** The joystick control is easy to use. Speed, direction and steering are all controlled with the joystick. The result is easier operation and improved productivity. Ergonomic placement reduces operator effort and fatigue.

**Speed and Direction.** The joystick has three simple detented positions for travel: forward, reverse and neutral. A new feature is the capability to utilize faster reverse speed as a percentage of forward speed for increased productivity.

Two joystick-mounted buttons are used to infinitely increase and decrease speed. An indicator on the dash displays the tractor's current operating speed setting. When the joystick is moved to the neutral position, the machine stops.

**Powerturn.** Utilizing active effort of both tracks during a turn allows for more pushing power at the blade and less spillage of material from the blade.



## Visibility

*The key to great grading is excellent visibility, and we deliver.*

**Air Inlet Heater.** The air inlet heater delivers dependable starts when operating in cold temperatures. A built-in temperature switch helps ensure lasting reliability.

**Lubrication System.** Gear driven oil pump provides lubrication from a deep sump oil pan. An efficient, multipleplate, water-cooled oil cooler prolongs engine and lubricant life.

**Cooling System.** A large diameter fan and full length, water-cooled cylinders, combined with excellent thermal efficiency, minimize heat rejection, prevent overheating and prolong engine life.

**Regulations.** The Caterpillar 3046 T engine meets EU Stage II emission regulations.



**Excellent Visibility.** Visibility is key to productive grading. The D3G, D4G and D5G deliver excellent visibility to the blade corners and edges. No longer does an operator have to grade by feel. He can easily see blade corners and cutting edges. Wide open peripheral vision allows the operator to have an optimum view of the jobsite.

**Windows.** Large tinted windows provide excellent visibility to the blade and surrounding work site. Large, sliding side windows provide flow-through ventilation. With 13% more glass area, the operator station delivers an outstanding view all around the machine.

**Angled Doors.** Angled doors on the left and right hand sides provide virtually unrestricted visibility to the sides of the machine.



**Excellent Line of Sight to Blade.** Grade stakes and utility structures are easy to see and maneuver around with the G-Series tractors.

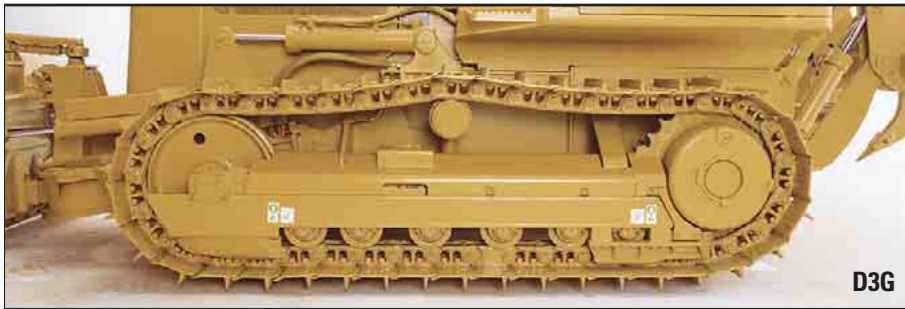
**Steering.** With the machine moving in forward or reverse, move the joystick to the left to turn the machine to the left; move the joystick to the right to turn right. The more the handle is moved to the right or left, the tighter the turn. Regardless of ground conditions, steering is consistent and predictable. Moving the joystick to the far right or left will make the tracks counterrotate for maneuvering in tight work areas.

**Counterrotation.** The D3G, D4G and D5G maneuver easily through side loading blade applications. Simply engage counter-rotation briefly to correct machine position. Counterrotation also provides easy, quick maneuvering in small, confined work areas.

**Tracking.** The D3G, D4G and D5G have excellent tracking capabilities which increase productivity on side slopes.

## Undercarriage

*Durable components provide maximum performance and wear life.*



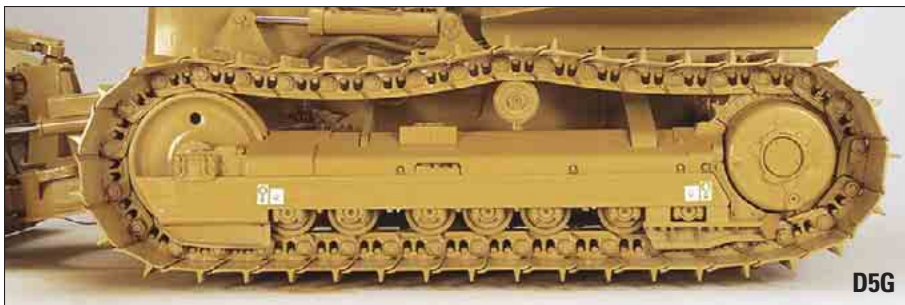
**Durable Components.** Caterpillar undercarriages are designed for long wear and lower owning and operating costs. Advanced metallurgy processes produce superior wear properties.

**Available Configurations.** The D3G, D4G and D5G are available in either an extra long (XL) or low ground pressure (LGP) undercarriage configuration.



**XL Undercarriage.** Track length is extended on extra long (XL) undercarriages for increased ground contact area and flotation, superior balance and excellent finish grading.

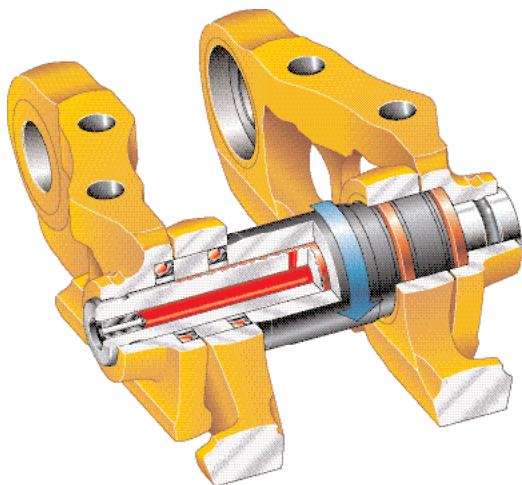
**LGP Undercarriage.** Low ground pressure (LGP) undercarriage offers a wider track, increasing ground contact area for optimum flotation and stability on sloping and finish grading jobs.



**LGP with Standard Shoes.** For increased stability when additional flotation is not required, 510 mm (20") track shoes are available for the D5G LGP.

## Undercarriage with Rotating Bushing Track Option

*Lowest owning and operating costs are delivered by the Caterpillar exclusive Rotating Bushing Track option.*



**Cat Exclusive Rotating Bushing Track Option.** Available on the D5G, the Caterpillar exclusive Rotating Bushing Track (RBT) increases undercarriage system life and reduces maintenance. Bushings rotate when in contact with the sprocket, removing the need to turn pins and bushings. This reduces downtime, balances component wear, reduces noise and allows components, such as links and bottom rollers, to reach their maximum wear life.

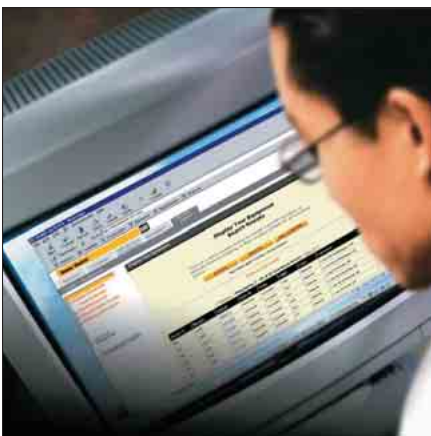
## Attachments

*New Cat work tools increase your productivity. Product Link and Machine Security System help protect your investment.*



**Parallelogram Ripper.** This new, larger tool is more aggressive and allows the operator to do more effective ripper work. Heavy duty design provides long life. Parallel linkage design allows for better penetration and maneuverability in tight working areas. A longer shank delivers more work per pass making the machine more productive.

**Hydrostatic Winch.** The new Caterpillar exclusive hydrostatic winch provides smooth modulation, infinitely variable speed and better control.

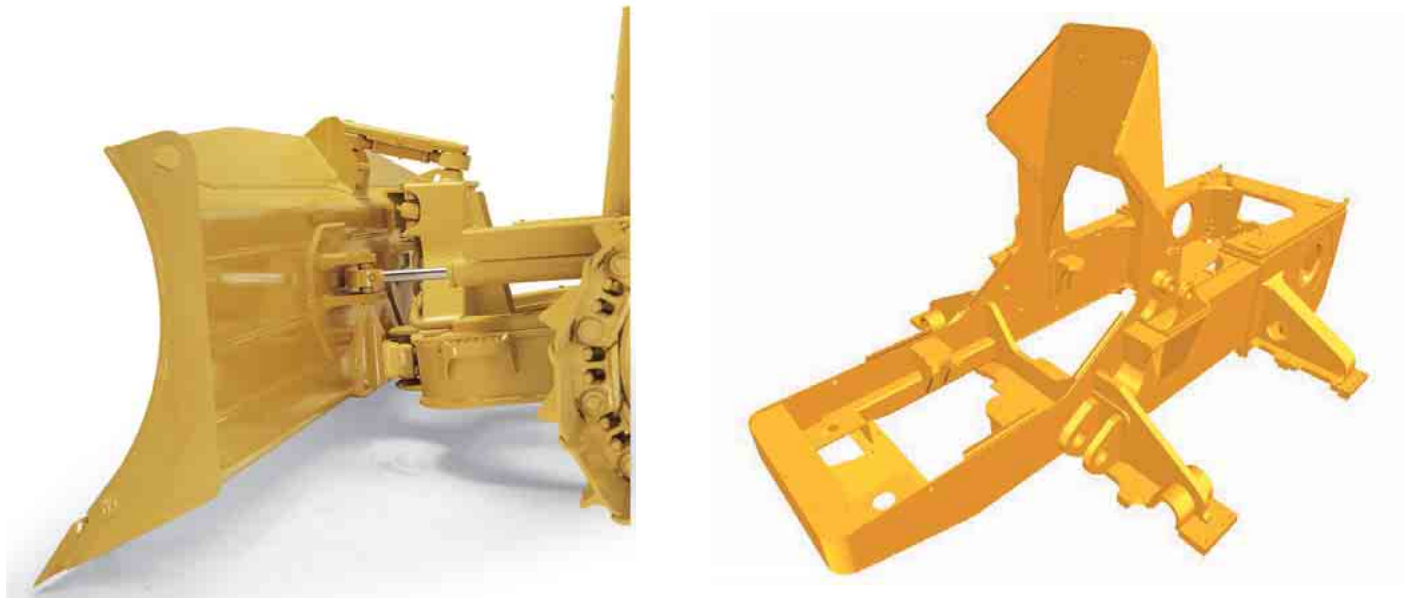


**Product Link.** This option allows the customer or dealer to obtain machine diagnostics and location from their office, eliminating trips and phone calls. Scheduled service can be completed more efficiently, thus reducing owning and operating costs. The product link provides updates on service meter hours and machine location as well as integrated mapping/route planning.

**Machine Security System.** Secure your investment with the Caterpillar Machine Security System (MSS), a programmable key system that provides optimum machine security for both fleet users and single users. MSS can reduce owning and operating costs by preventing unauthorized machine use, thus saving fuel and maintenance costs. MSS prevents theft and vandalism, which may reduce insurance costs.

## Blade and Mainframe

*With a 14% increase in blade capacity, the Variable Pitch, Power Angle and Tilt (VPAT) blade is designed and built for unmatched versatility, durability and strength.*



**VPAT Blade.** The VPAT blade is specifically designed for finish grading, backfilling ditches, cutting V ditches, windrowing, fill spreading, medium land clearing and heavy dozing. VPAT blades are built with four full-width, box-section reinforcement cells for unmatched strength and durability.

**Larger Trunnion.** The blade trunnion ball size has been increased to provide longer life of the trunnion and reduce owning and operating costs. The trunnion is also now mounted on the C-frame instead of the blade.

### **Adjustable Top Pitch Link.**

The adjustable top pitch link provides a solid link between the blade and the top of the tilt tower on the C-frame. The turn buckle top pitch link allows the blade pitch to be adjusted without the use of tools. The cutting edge position can be adjusted between 50 and 55 degrees. The pitch link cover has been redesigned to provide better retention.

**Improved Pin Joints.** Pin joints have been improved to be more durable and provide longer life. Remote lubrication points provide easier service.

### **Increased Blade Capacity.**

Blade capacity has been increased by 14% to greatly improve productivity.

**One-Piece Mainframe.** Modeled after the large Caterpillar track-type tractors, the mainframe provides a solid back bone for handling forces generated during tough dozing. The robotic welding process delivers reliability and durability throughout the life of the machine.

## Hydrostatic Winch

*Providing high line pull and high line speed, this new winch improves control for better modulation.*

**Winch.** Previous mechanical winches were driven by shafts and controlled by brakes and clutches. This new winch is driven by its own closed-loop hydrostatic system consisting of a variable displacement hydraulic piston pump and motor.

### **Infinitely Variable Speed Control.**

Similar to the hydrostatic system used to drive and control the tracks of the tractor, this winch offers outstanding control of the load with infinitely variable modulation of speed and pull. Other shaft-driven winches force the operator to choose the gear ratio of the winch. The G-Series hydrostatic winch eliminates this compromise by providing the speed of a standard speed winch and the pull of a low speed winch, all in one package.

**Forestry Segment.** A new, easier way to work in the woods. The new hydrostatic winch makes the job easier with:

- Excellent line pull at any speed.
- Infinitely variable drum speed.
- Lower operator effort.
- Excellent load control.



**360 Degree Guarding.** All around screen guarding is available. Canopy version includes screened, hinged doors with dampening device along with side and rear screens. The cab version offers Lexan glass doors for improved visibility while providing protection. Meets OSHA and WCB regulations.



**Forestry Blade.** The forestry blade has additional guarding to protect the tractor from debris and to provide increased blade capacity. The forestry blade also features increased moldboard thickness for added durability.

## Serviceability and Customer Support

*Cat dealer services help you operate longer with lower costs.*



**Serviceability.** Longer service intervals and easier maintenance result in better machine availability and lower owning and operating costs.

The D3G, D4G and D5G feature:

- Side by side radiator/transmission cooler.
- Easier filter access.
- Centrally located hydraulic pressure tap bank.
- Extended oil and oil filter change intervals.
- Extended oil dipstick.
- Comprehensive on-board diagnostics.
- Turbine precleaner
- Coolant level sight gauge



### Right Side Access Doors.

Access doors provide easy access to the diagnostic test bank, hydraulic oil filters and disconnect switch.



### Left Side Access Doors.

Left side access doors provide easy access to:

- Cab fresh air filter.
- Heavy duty battery.
- Fuel/water separator with filter.
- Grease gun holder.



**Selection.** Make detailed comparisons of the machines you are considering before you buy. What are the job requirements? What production is needed? What is the true cost of lost production? Your Cat dealer can give you precise answers to these questions.

**Purchase.** Look at the value G-series tractors offer. Consider all the flexible financing options your Cat dealer offers as well as day-to-day operating costs.

**Operation.** Improving operating techniques can boost your profits. Your Cat dealer has training literature and other ideas to help you increase productivity.

**Maintenance.** Repair options guarantee the cost of repairs up front. Diagnostic programs such as Scheduled Oil Sampling and Technical Analysis help you avoid unscheduled repairs.

**Replacement.** Repair, rebuild or replace? Your Cat dealer can help you evaluate the cost involved so you can make the right choice.

**Product Support.** You will find high availability of parts at our dealer parts counter. Cat dealers utilize a worldwide computer network to find in-stock parts to minimize machine downtime. Additionally, Caterpillar offers a line of genuine remanufactured components which can help lower repair costs.

**Easy Financing.** Your Cat dealer can provide a financing package to meet your needs.

## Engine

|              | D3G                  | D4G                  | D5G                  |
|--------------|----------------------|----------------------|----------------------|
| Engine Model | 3046 T               | 3046 T               | 3046 T               |
| Gross Power  | 57 kW/77 hp          | 65 kW/87 hp          | 74 kW/99 hp          |
| Net Power    |                      |                      |                      |
| ISO 9249     | 52 kW/70 hp          | 60 kW/80 hp          | 67 kW/90 hp          |
| EEC 80/1269  | 52 kW/70 hp          | 60 kW/80 hp          | 67 kW/90 hp          |
| Displacement | 4996 cm <sup>3</sup> | 4996 cm <sup>3</sup> | 4996 cm <sup>3</sup> |
| Bore         | 94 mm                | 94 mm                | 94 mm                |
| Stroke       | 120 mm               | 120 mm               | 120 mm               |

- Ratings at 2200 rpm.
- Net power advertised is the power available at the flywheel when engine is equipped with fan, air cleaner, muffler and alternator.
- No derating required up to 2300 m altitude.

## Steering and Braking

- Full powerturn
- Counterrotation
- Single lever steering, speed and direction control
- Hydrostatic (dynamic) braking through machine drive system using transmission control lever, center brake pedal or decel pedal.

## Final Drive

- Double-reduction, with outboard planetary gear set.
- Mounted independently of track frames to isolate them from machine weight and ground-induced shock loads.

## Transmission

|                       |            |
|-----------------------|------------|
| Drive Pumps           | 2          |
| Track motors          | 2          |
| Relief valve settings | 44 000 kPa |
| Maximum travel speed  |            |
| forward               | 9 km/h     |
| reverse               | 9.6 km/h   |

- Dual-path, closed loop hydrostatic drive provides infinitely variable speeds from 0-9 km/h forward and 0-9.6 km/h reverse.
- Full-flow filtering of hydrostatic charge system oil.
- Drive pumps: two variable-displacement, slipper-axial piston pumps mounted tandem-style to engine flywheel housing.
- Track motors: two variable-displacement, link-type piston motors.

## Hydraulic Controls

|                      |            |
|----------------------|------------|
| Pump Output          | 61.1 L/min |
| Relief valve setting | 20 000 kPa |

- Pump output ratings at 2200 rpm and 6895 kPa
- Control Positions:
  - Lift cylinders - raise, hold, lower, float.
  - Tilt cylinders - left, hold, right.
  - Angle cylinders - left, hold, right.
  - Ripper cylinders - raise, hold, lower.

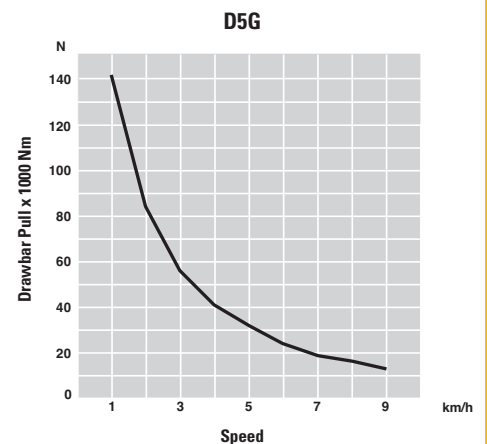
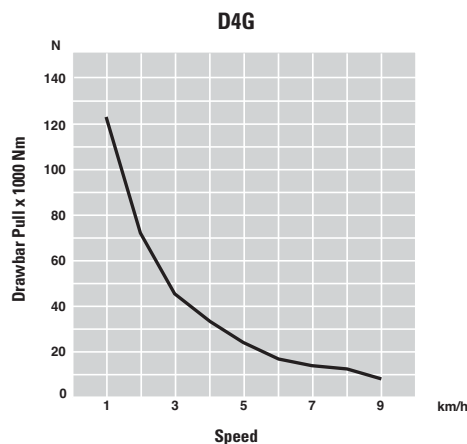
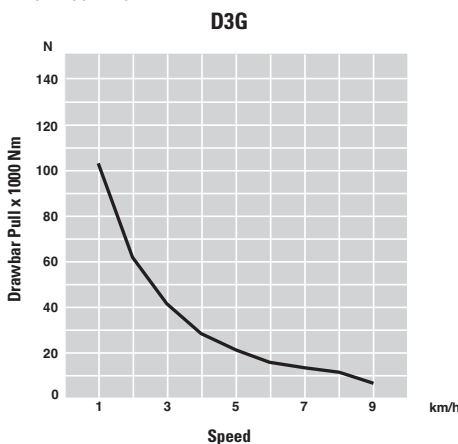
## ROPS/FOPS

- ROPS (Rollover Protective Structure) offered by Caterpillar for the machine meets ROPS criteria ISO 3471-1994.
- FOPS (Falling Object Protective Structure) meets FOPS criteria ISO 3449-1992 Level II.

## Sound

- The operator sound level measured according to the procedures specified in ISO 6396:1992 is 82 dB(A), for cab offered by Caterpillar, when properly installed and maintained and tested with the doors and windows closed.
- The labeled sound power level is 106 dB(A) for D3G and 107 dB(A) for D4G/D5G measured according to the test procedures and conditions specified in 2000/14/EC.

## Drawbar Pull



## Winch

|                    |                 |
|--------------------|-----------------|
| Weight             | 610 kg          |
| Winch Drive        | Hydrostatic     |
| Control            | Pilot hydraulic |
| Speed              | Variable        |
| Winch length       | 705 mm          |
| Overall width      | 741 mm          |
| Drum diameter      | 254 mm          |
| Drum width         | 274 mm          |
| Throat clearance   | 171.5 mm        |
| Rope diameter      |                 |
| recommended        | 16 mm           |
| optional           | 19 mm           |
| Drum capacity      |                 |
| recommended cable  | 113 m           |
| optional cable     | 78 m            |
| Maximum line pull  |                 |
| bare drum          | 18 144 kg       |
| full drum          | 11 340 kg       |
| Maximum line speed |                 |
| bare drum          | 40 m/min        |
| full drum          | 63 m/min        |

- Infinitely variable line speed and line pull from 0 to maximum.
- Power in/power out, brake off, freespool (standard equipment).
- Single lever, low effort pilot hydraulic control.
- Precise load control and speed modulation.
- Integral mounted drawbar.
- 3 roller fairlead available. Kit available to add a 4th roller.

## Weights

| Operating Weight | D3G     | D4G     | D5G     |
|------------------|---------|---------|---------|
| XL               | 7750 kg | 8260 kg | 9320 kg |
| LGP              | 8190 kg | 8600 kg | 9670 kg |

Operating with dozer blade, cab, back-up alarm, operator, coolant, lubricants and full fuel tank.

## Undercarriage

|                               | D3G                    | D4G                    | D5G                    |
|-------------------------------|------------------------|------------------------|------------------------|
| Number of rollers (each side) | 6                      | 7                      | 7                      |
| Number of shoes (each side)   | 39                     | 41                     | 39                     |
| Shoe width                    |                        |                        |                        |
| XL                            | 406 mm                 | 460 mm                 | 510 mm                 |
| LGP                           | 635 mm                 | 635 mm                 | 660 mm                 |
| Length of track on ground     |                        |                        |                        |
| XL                            | 2055 mm                | 2211 mm                | 2317 mm                |
| LGP                           | 2055 mm                | 2211 mm                | 2317 mm                |
| Track gauge                   |                        |                        |                        |
| XL                            | 1448 mm                | 1499 mm                | 1549 mm                |
| LGP                           | 1676 mm                | 1676 mm                | 1727 mm                |
| Ground contact area           |                        |                        |                        |
| XL                            | 16 687 cm <sup>2</sup> | 20 341 cm <sup>2</sup> | 23 633 cm <sup>2</sup> |
| LGP                           | 26 099 cm <sup>2</sup> | 28 080 cm <sup>2</sup> | 30 584 cm <sup>2</sup> |
| Ground pressure               |                        |                        |                        |
| XL                            | 43.2 kPa               | 38 kPa                 | 37.1 kPa               |
| LGP                           | 29.3 kPa               | 28.6 kPa               | 29.7 kPa               |

- Sealed and lubricated track (S.A.L.T.).
- Hydraulic track adjusters.
- Box section track roller frames.
- Bolt-on rear track guiding guards.
- Serrated, two-piece split master link.
- Full length recoil guarding with sprocket guards and wipers.
- Single-grouser shoes.
- Segmented sprocket.
- Sealed and lubricated rollers and idlers.

## Ripper

|  |                |
|--|----------------|
| Type                                       | Parallelogram  |
| Number of Shanks                           | 3              |
| Maximum digging depth                      | 337 mm         |
| Maximum reach at ground line (D3G/D4G/D5G) | 738/627/615 mm |
| Maximum ground clearance under tip         | 412 mm         |
| Overall width                              | 1710 mm        |
| Height                                     | 165 mm         |
| Weight                                     | 563 kg         |

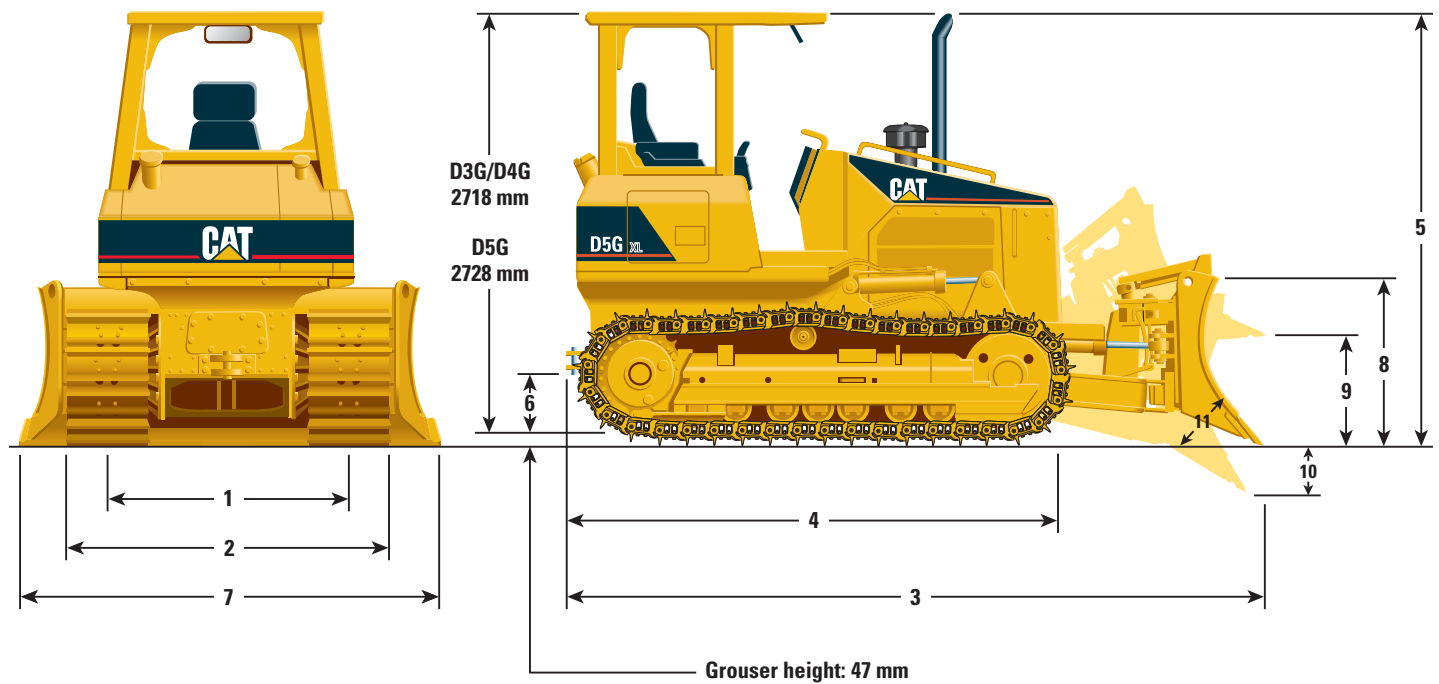
## Service Refill Capacities

|                             | D3G    | D4G    | D5G    |
|-----------------------------|--------|--------|--------|
|                             | Liters | Liters | Liters |
| Fuel tank                   | 165    | 187    | 187    |
| Crankcase and filter        | 13     | 13     | 13     |
| Final drives                |        |        |        |
| XL (each side)              | 13.8   | 14.7   | 14.7   |
| LGP (each side)             | 20.5   | 21.5   | 21.5   |
| Cooling system              | 21     | 21     | 16.1   |
| Transmission/hydraulic tank | 46.5   | 46.5   | 46.5   |



# Dimensions

All dimensions are approximate.



|   |                | XL     |        |        | Intermediate |        |        | LGP    |        |        |
|---|----------------|--------|--------|--------|--------------|--------|--------|--------|--------|--------|
|   |                | D3G    | D4G    | D5G    | D3G          | D4G    | D5G    | D3G    | D4G    | D5G    |
| <b>1</b> Track gauge                                    | mm             | 1448   | 1499   | 1549   | –            | –      | –      | 1676   | 1676   | 1727   |
| <b>2</b> Width of tractor<br>(standard shoes, no blade) | mm             | 1854   | 1959   | 2059   | –            | –      | –      | 2311   | 2311   | 2387   |
| <b>3</b> Overall length (with blade)                    | mm             | 4020   | 4035   | 4336   | –            | –      | –      | 4017   | 4035   | 4252   |
| <b>4</b> Length of basic tractor<br>(without blade)     | mm             | 3103   | 3103   | 3184   | –            | –      | –      | 3103   | 3103   | 3184   |
| <b>5</b> Tractor height                                 | mm             | 2765   | 2765   | 2775   | –            | –      | –      | 2765   | 2765   | 2775   |
| <b>6</b> Ground clearance                               | mm             | 374    | 374    | 384    | –            | –      | –      | 374    | 374    | 384    |
| <b>Blade</b>  |                |        |        |        |              |        |        |        |        |        |
| <b>7</b> Blade width                                    | mm             | 2461   | 2671   | 2690   | 2921         | 2921   | 2921   | 3146   | 3146   | 3254   |
| <b>8</b> Blade height                                   | mm             | 936    | 1028   | 1101   | 843          | 922    | 1028   | 843    | 922    | 1028   |
| <b>9</b> Blade lift height                              | mm             | 688    | 686    | 760    | 695          | 733    | 789    | 695    | 733    | 789    |
| <b>10</b> Digging depth                                 | mm             | 554    | 568    | 630    | 527          | 521    | 582    | 527    | 521    | 582    |
| <b>11</b> Blade cutting edge angle, adjustable          |                | 50-55° | 50-55° | 50-55° | 50-55°       | 50-55° | 50-55° | 50-55° | 50-55° | 50-55° |
| Maximum tilt  | mm             | 369    | 387    | 390    | 423          | 423    | 423    | 456    | 456    | 471    |
| Maximum angle (either side)                             |                | 25°    | 25°    | 25°    | 25°          | 25°    | 25°    | 25°    | 25°    | 25°    |
| Blade width at maximum angle                            | mm             | 2247   | 2438   | 2456   | 2666         | 2666   | 2666   | 2871   | 2871   | 2970   |
| Blade capacity (SAE)                                    | m <sup>3</sup> | 1.44   | 1.92   | 2.19   | 1.42         | 1.69   | 2.09   | 1.53   | 1.84   | 2.34   |

## Standard Equipment

Standard and optional equipment may vary. Consult your Caterpillar dealer for specifics.

### Powertrain

Air-to-oil transmission cooler and side by side radiator  
Air cleaner, radial dry-type with turbine precleaner  
Blower fan  
CAT 3046 T 6-cylinder diesel engine with 12-volt direct electric key start/stop  
Fuel priming pump  
Fuel/water separator with integral filter  
Hydrostatic transmission, dual path, closed loop  
Muffler

### Electrical

Air inlet heater  
Alternator, 110 amp  
Back-up alarm  
Batteries, heavy duty, 12-volt, maintenance free, two 900 cca  
Horn  
12-volt powerport

### Hydraulics

3 valve  
Hydraulic pump and oil  
Single lever-three function control

### Antifreeze

Extended Life Coolant -37°C

### Undercarriage

Roller track frame  
D3G: 6  
D4G and D5G: 7  
Track gauge  
D3G:  
XL 57" (1448 mm)  
LGP 66" (1676 mm)  
D4G:  
XL 59" (1499 mm)  
LGP 66" (1676 mm)  
D5G:  
XL 61" (1549 mm)  
LGP 69" (1753 mm)  
Sealed and lubricated tracks  
D3G and D5G: 39-section  
D4G: 41-section  
Single grouser shoes  
D3G:  
XL 16" (406 mm)  
LGP 25" (635 mm)  
D4G:  
XL 18" (460 mm)  
LGP 25" (635 mm)  
D5G:  
XL 20" (510 mm)  
LGP 26" (660 mm)  
Front/rear guiding guards  
Full length recoil guards with sprocket wiper plates  
Hydraulic track adjusters  
Segmented sprockets  
Split master link

### Operator Environment

ROPS, Canopy  
Headliner  
Dash mounted lighted gauge package includes:  
Fuel level  
Coolant temperature  
Engine oil pressure  
Transmission oil temperature  
Maximum speed setting gauge  
Indicator lights:  
Low engine oil pressure  
Parking brake  
Hydraulics filter bypass  
Low alternator charging  
Electronic control fault  
Water in fuel  
Air inlet restriction  
Air intake heater  
Service hour meter  
Comfort adjustable vinyl suspension seat  
Seat, comfort, suspension, vinyl  
Seat belt (76 mm)  
Adjustable arm rests  
Joystick control lever:  
Speed  
Direction  
Steering  
Counterrotation  
Adjustable foot rests  
Decelerator  
12-volt powerport

### Other Standard Equipment

C-Frame, VPAT, hydraulic cylinders and lines  
Heavy duty crankcase guard  
Engine enclosures  
Heavy-duty hood, radiator guard and grill  
Retrieval hitch (rear)  
Front pull device  
Vandalism protections  
Instructions, English  
Electronic technician connector  
Product Link - Installation ready

## Optional Equipment

(with approximate change in operating weight)

|  | kg   |  | kg  |
|--|------|--|-----|
| AccuGrade installation arrangement   | 31   | Lights   |     |
| Blade, variable pitch, power angling and tilt  |      | ROPS, canopy, two front, one rear                            | 4   |
| D3G  |      | ROPS, cab, two front, one rear                               | 7   |
| XL, 1.43 m <sup>3</sup> , 97" (2456 mm) width  | 503  | Machine Security System                                      | 3   |
| Intermediate, 1.41 m <sup>3</sup> , 115" (2921 mm) width   | 527  | Product Link   | 8   |
| LGP, 1.53 m <sup>3</sup> , 124" (3146 mm) width  | 560  | Radiator grid, sandblast                                     | 12  |
| D4G  |      | Ripper, parallelogram, includes three shanks and teeth       | 563 |
| XL, 1.91 m <sup>3</sup> , 105" (2671 mm) width   | 587  | Screens:   |     |
| Intermediate, 1.68 m <sup>3</sup> , 115" (2921 mm) width   | 606  | Front and door, for use with ROPS canopy                     | 91  |
| LGP, 1.83 m <sup>3</sup> , 124" (3146 mm) width  | 647  | Rear, for use with ROPS canopy                               | 23  |
| 1.43 m <sup>3</sup> , 97" (2456 mm) width  | 503  | Rear, for use with ROPS cab                                  | 24  |
| D5G  |      | Side, for use with ROPS canopy                               | 41  |
| XL, 2.19 m <sup>3</sup> , 106" (2690 mm) width   | 683  | Side, for use with ROPS cab                                  | 46  |
| Intermediate, 2.09 m <sup>3</sup> , 115" (2921 mm) width   | 627  | Sound suppression, exterior                                  |     |
| LGP, 2.34 m <sup>3</sup> , 128" (3254 mm) width  | 686  | D3G  | 43  |
| 1.43 m <sup>3</sup> , 97" (2456 mm) width  | 503  | D4G  | 40  |
| Forestry, 2.19 m <sup>3</sup> , 106" (2690 mm) width   | 1001 | D5G  | 16  |
| Cab, ROPS, includes air conditioner, comfort seat (cloth), 110 amp alternator  | 403  | Starting aid, ether  | 4   |
| Cab, ROPS, logging, includes screens and polycarbonate door windows, air conditioner, comfort seat (cloth), 110 amp alternator | 606  | Sweeps, logging  | 133 |
| Counterweight, front   | 289  | Tracks:  |     |
| Counterweights, idler mounted  |      | D3G  |     |
| D3G and D4G  | 136  | 14" (356 mm) triple grouser, sealed and lubricated track     | -34 |
| Drawbar, towing  | 13   | 25" (635 mm) self cleaning, sealed and lubricated track      | 175 |
| Drive, auxiliary   | 11   | D4G  |     |
| Guards   |      | 25" (635 mm) self cleaning, sealed and lubricated track      | 181 |
| Rock, idler  |      | D5G  |     |
| D3G and D4G (with counterweight)   | 21   | 18" (460 mm) single grouser, sealed and lubricated track     | -84 |
| D3G and D4G (without counterweight)  | 15   | 18" (460 mm) single grouser, rotating bushing track          | 9   |
| D5G  | 31   | 20" (510 mm) single grouser, rotating bushing track          | 42  |
| Track Roller   |      | 26" (660 mm) single grouser, rotating bushing track          | 42  |
| D3G  | 69   | Winch  |     |
| D4G  | 78   | Installation, includes pump, lines, filter and control lever | 69  |
| D5G  | 99   | Winch, variable speed  | 610 |
| Heater   |      | Fairlead (3-roller) for winch                                | 120 |
| Engine coolant   | 0.45 | 4th roller kit for fairlead                                  | 17  |
| ROPS canopy  | 33   |  |     |
| Heavy duty grill   | 16   |  |     |
| Hydraulic arrangement  |      |  |     |
| 4-valve, 1-lever dozer control, ripper   | 12   |  |     |
| 4-valve, 1-lever dozer control, winch  | 12   |  |     |

# D3G, D4G and D5G Track-type Tractors

HEHT2768-1 (11/2003) hr

Featured photos of machines may not always include standard equipment.  
See your Caterpillar Dealer for available options.  
Materials and specifications are subject to change without notice.

[www.CAT.com](http://www.CAT.com)  
© 2003 Caterpillar

**CATERPILLAR**<sup>®</sup>