

BB15/25 SERIES BOX SCRAPERS

HP REQUIRED
17-55 HP

HITCH
Cat. 1



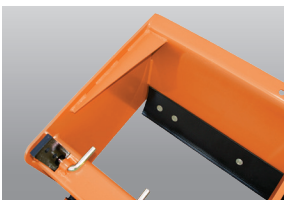
DIRTWORKING

Level, finish, grade, and backfill - all with one tool.

Land Pride's BB15 and BB25 Series Fixed Bar Box Scrapers are ideal for ripping, leveling, finish grading, and backfilling applications at feedlots, outdoor arenas, and construction sites, or for maintenance operations on lanes or roadways. The BB25 offers five different working widths to choose from. The roll-formed moldboard keeps materials flowing putting less drag on the Box Scraper, resulting in lower HP requirements and faster working conditions. The rear-mounted blade allows for backfilling trenches or along foundations.



| | BB1560 | BB1566 | BB1572 | BB2560 | BB2566 | BB2572 | BB2584 | BB2596 |
|----------------------------|---|-----------|-----------|---|-----------|-----------|-----------|-----------|
| Horsepower | 17-40 HP | | | 25-55 HP | | | | |
| Hitch | Cat. 1 | | | Cat. 1 | | | | |
| Working Width (cm) | 60" (152) | 66" (168) | 72" (183) | 60" (152) | 66" (167) | 72" (182) | 84" (213) | 96" (244) |
| Height of Moldboard | 17" | | | 17" | | | | |
| Side Panel Material | 5/16" | | | 3/8" | | | | |
| Depth of Bucket | 22" | | | 22" | | | | |
| Overall Depth | 31-1/2" | | | 31-1/2" | | | | |
| Overall Height | 35" | | | 35" | | | | |
| Weight - lb (kg) | 428 (194) | 450 (204) | 504 (229) | 471 (214) | 500 (227) | 549 (249) | 593 (269) | 658 (298) |
| Number of Shanks | 4 | 5 | 6 | 5 | 5 | 7 | 7 | 8 |
| A-Frame Material | 1/2" x 3" Flat Bar | | | 1/2" Plate | | | | |
| Cutting Edges | Two 1/2" x 6" High Carbon Heat Treated Blades, Reversible & Replaceable | | | Two 1/2" x 6" High Carbon Heat Treated Blades, Reversible & Replaceable | | | | |
| Colors | | | | | | | | |



Side panel gussets reinforce the structural integrity during extreme conditions. (BB25 only)

*See dealer for complete warranty information.

